

LIVE THE HIGH LIFE IN ST ALBANS



QUINATA'S ZIGGURAT HOUSE HAS SET NEW STANDARDS FOR MODERN LIVING IN ST ALBANS

Delivering 125 new homes, Ziggurat House is one of the largest developments in St Albans. Benefitting from a concierge service and private landscaped roof gardens, residents of Ziggurat House will benefit from the feel of a growing community, with surety that standard is not something we ever compromise.

Historic St Albans isn't the first place you would expect to find contemporary design and an urban edge, which is exactly what makes Ziggurat House so desirable.

Just moments from the vibrant city centre, the apartments combine the style and space of a truly forward-thinking, twenty-first century home with the great location and characterful surrounds that makes the neighbourhood a great place to live.

WELCOME TO THE NEW GENERATION OF STYLISH CITY-MEETS-COUNTRY LIVING.

Z I G G U R A T
H O U S E



A NEW LANDMARK

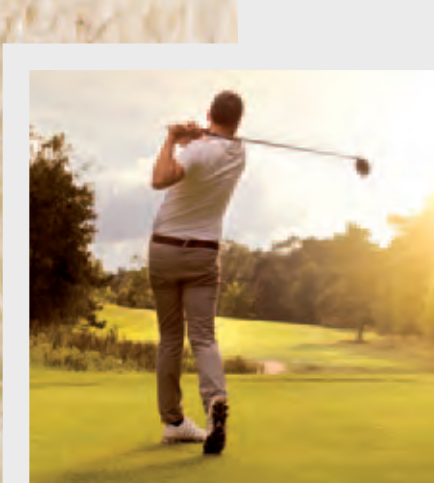
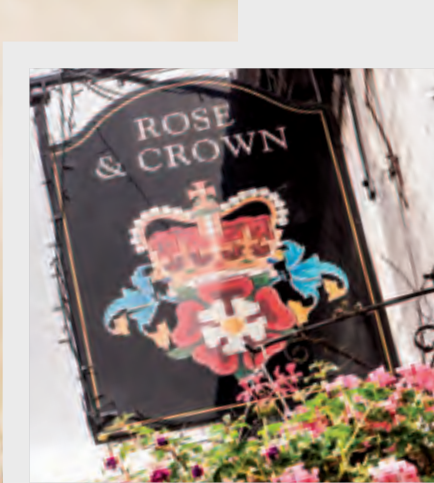


THE STRIKING DESIGN OF ZIGGURAT HOUSE SETS A NEW STANDARD FOR THIS HISTORIC CITY

With its elegant brick façade and contemporary architectural flourishes, Ziggurat House is certainly designed to stand out from the crowd. This collection of 125 studio, one and two bedroom apartments is a new generation of homes for this historic city, offering the perfect combination of personality and modernity.

The building's materials have been chosen for their timeless appeal, with a mixture of warm, red brick, accented by cool metal detailing on balconies. Up on the roof, meanwhile, a private residents' rooftop garden offers further space to unwind with wonderful, uninterrupted views of the city and Hertfordshire countryside. The classic-with-a-twist approach continues inside with well thought out, open plan living spaces and a focus on the things that matter – and make a real difference – in a home today.





THE LUXURY OF BALANCE



AT ZIGGURAT HOUSE YOU NEEDN'T VENTURE
FAR TO GET AWAY FROM IT ALL

With its close-knit community feel and easy access to both central London and Hertfordshire's many glorious green spaces, St Albans offers that rarest of luxuries – balance. Though just minutes from the city centre and train station, outdoor types can just as quickly revel in the choice of leafy parks, long walks and challenging golf courses.

Meanwhile, St Albans' crowning glory, Verulamium Park, offers over 100 acres of picturesque gardens, wildlife, lakes, sports facilities and tennis courts.

For the finer things in life, take afternoon tea in the perfectly manicured surrounds of Sopwell House, or escape for a secluded picnic for two by the river. In fact, whatever you're into, St Albans offers boundless possibilities.

Z I G G U R A T
H O U S E



EVERYDAY PLEASURES



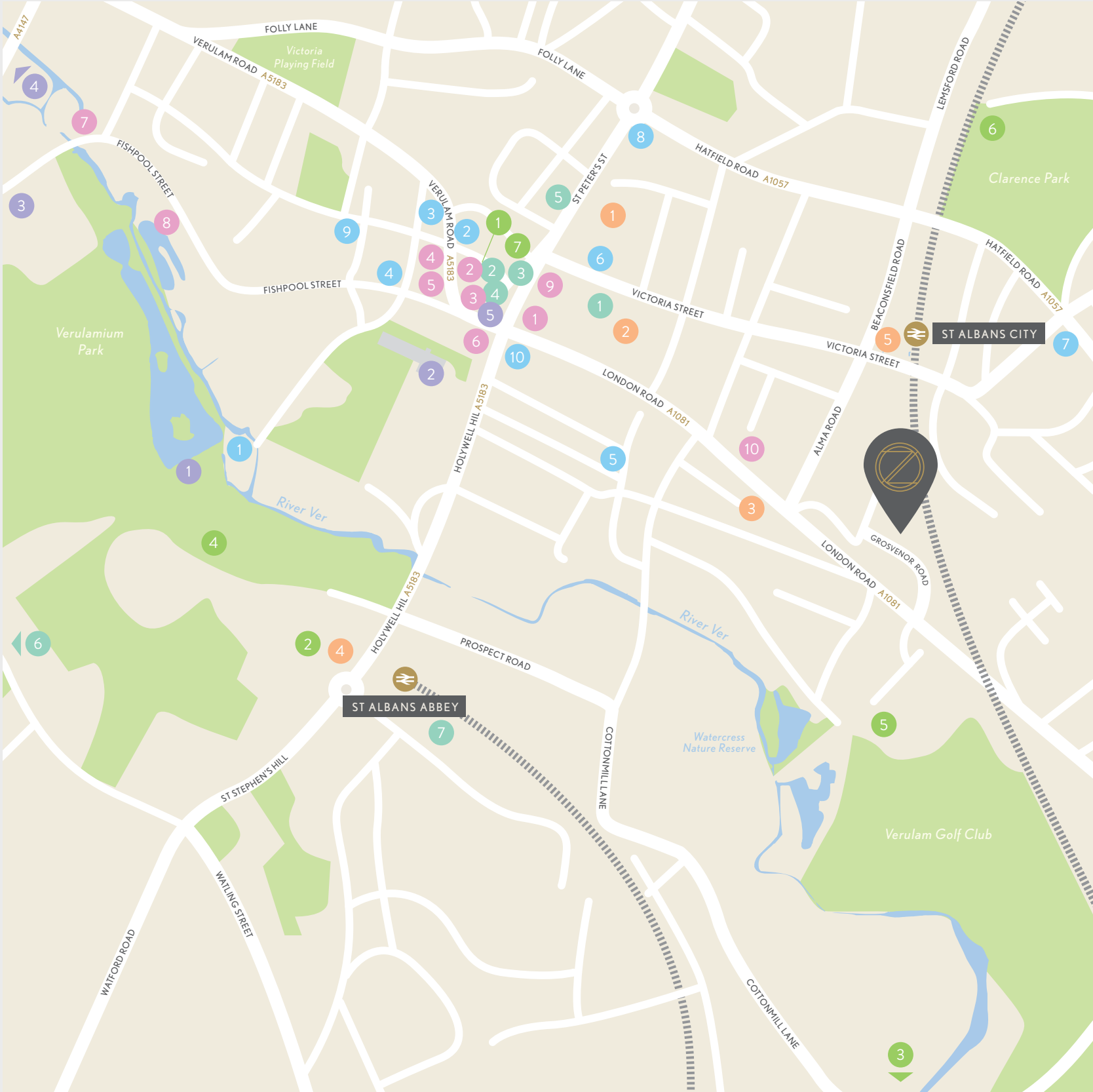
MOMENTS FROM ZIGGURAT HOUSE, ST ALBANS' RENOWNED SHOPPING, DINING AND CULTURAL SCENE AWAITS

Nestled in the buzzing heart of St Albans, with your home at Ziggurat House you couldn't be better placed to enjoy its many pleasures. Just moments from your door, discover great brunch spots and cosy pubs; lively bars and fine dining; favourite restaurant chains and unique family-run cafés; independent boutiques and can't-live-without high street shops.

Yet there's much more than shopping and indulgence on offer. If culture's your thing, catch a movie at The Odyssey, an Art Deco gem, a play at the endearing Abbey Theatre, or check out a gig at the renowned Alban Arena or one of the other more quirky venues dotted around the city. Or because sometimes it's all about the simple pleasures in life, stroll through the pretty, atmospheric streets and drink in the laid-back St Albans vibe.

Z I G G U R A T
H O U S E





LOCATION

EATS

- | | |
|----|----------------------------|
| 1 | Bills |
| 2 | Wagamama |
| 3 | Carluccio's |
| 4 | Loch Fyne |
| 5 | Brasserie Blanc |
| 6 | Côte Brasserie |
| 7 | The Waffle House |
| 8 | St Michael's Manor |
| 9 | Jamie's Italian Restaurant |
| 10 | Prime Steak & Grill |

CULTURE

- | | |
|---|------------------------|
| 1 | Roman Wall |
| 2 | Cathedral & Abbey |
| 3 | Verulamium Museum |
| 4 | Roman Open Air Theatre |
| 5 | Clock Tower |

ENTERTAINMENT

- | | |
|---|-----------------------|
| 1 | Alban Arena |
| 2 | Maltings Arts Theatre |
| 3 | Odyssey Cinema |
| 4 | Abbey Theatre |
| 5 | The Horn |

DRINKS

- | | |
|----|------------------------|
| 1 | Ye Olde Fighting Cocks |
| 2 | Mokoko |
| 3 | The Brickyard |
| 4 | Suckerpunch Bar |
| 5 | White Hart Tap |
| 6 | Slug & Lettuce |
| 7 | The Crown |
| 8 | The Cock |
| 9 | The Verulam Arms |
| 10 | The Peahen |

SHOPPING

- | | |
|---|---|
| 1 | The Maltings
<i>including Crew Clothing, H&M, Office, Oliver Bonas, River Island, Swarovski, Topshop</i> |
| 2 | Christopher Place Shopping Centre
<i>including French Connection, Cath Kidston</i> |
| 3 | Reiss |
| 4 | Jack Wills |
| 5 | Marks & Spencer |
| 6 | Waitrose |
| 7 | Sainsbury's |

SPORTS & LEISURE

- | | |
|---|----------------------------------|
| 1 | Fitness First |
| 2 | Westminster Lodge Leisure Centre |
| 3 | Sopwell House Hotel & Spa |
| 4 | Abbey View Golf Club |
| 5 | Verulam Golf Club |
| 6 | St Albans Football Club |
| 7 | Champneys City Spa |

Z I G G U R A T
H O U S E



STAY WELL CONNECTED



FOR A CHANGE OF SCENE, THE BIG CITY IS NEVER FAR AWAY

From your home at Ziggurat House, St Albans' fast and direct connections make getting around easy. The city's main station offers a speedy commute into King's Cross St Pancras in less than half an hour, with a choice of onward connections to the West End, City and major airports.

St Albans Abbey Station, meanwhile, takes you straight into Euston via Watford Junction. If you'd rather travel at your own speed, the apartments' allocated parking and nearby M1 and M25 makes driving in any direction simple.



Z I G G U R A T
H O U S E



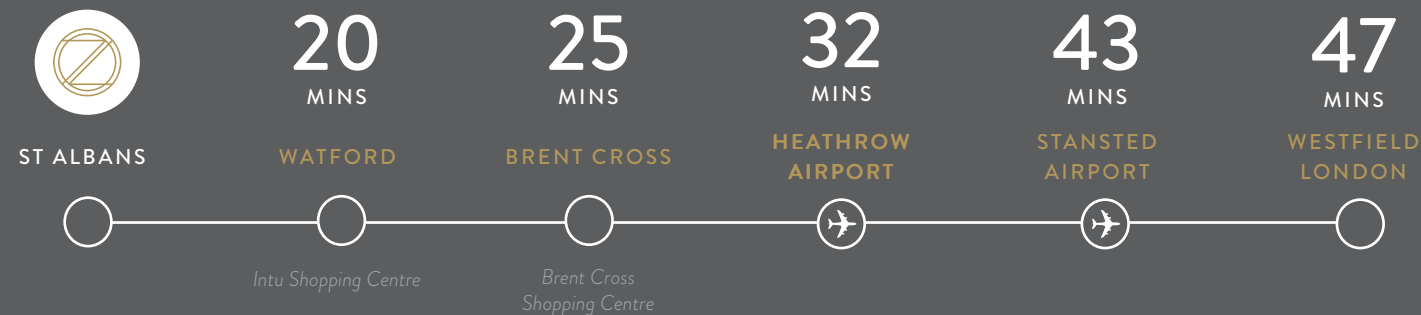


TRAVEL

BY TRAIN



BY CAR



Source: Transport for London and Google Maps.

ZIGGURAT
HOUSE





A HOME TO MAKE YOUR OWN



STEP INSIDE ZIGGURAT HOUSE AND DISCOVER THE STYLE
AND SPACE YOU'VE BEEN LOOKING FOR

Quinata have ensured that the apartments at Ziggurat House have been designed to utilise all of the space without compromising on quality.

All kitchens have integrated Smeg appliances, and have all been carefully individually designed. Featuring high gloss cabinets, beautifully balanced by contrasting stone worktops.

The design of the apartments have been carried through each room ensuring consistency and high thought out design.

ZIGGURAT
HOUSE



FEATURES & SPECIFICATION



Furniture supplied by Andrew James Interiors.

Z I G G U R A T
H O U S E



KITCHEN

Contemporary high gloss handleless units with soft closure (*white colour*)
Stone worktop
Under counter LED lights
Stainless steel under mount kitchen sink
Chrome kitchen tap single mixer
Smeg appliances including integrated fridge/freezer, washer/dryer, ceramic hob, single oven and chimney hood

BATHROOM

Saneux bath with glass shower screen and fixed shower head
White vanity units (*white colour*) with incorporated basin
Back to wall WC
Heated towel rail
Fully tiled walls and floor

EN SUITE SHOWER ROOM

(To select apartments)
Basin
Back to wall WC
Shower with bi-fold doors
Fully tiled porcelain walls and floor

EXTERNAL

Juliet balconies to all apartments
Controlled access car park for select apartments
Cycle storage
Security CCTV monitoring
External landscaped zones
Private rooftop landscaped gardens

GENERAL

Underfloor heating throughout
Pre-wired for broadband and Sky and Virgin connectivity
Brushed chrome switches, sockets and handles
White square skirtings and architrave
LED spot lights throughout
Oak style wood floor to entrance hall, living room and kitchen areas
Luxury carpet to bedrooms
Four passenger lifts with access to all floors/ one passenger lift with access to floor 7
High performance external wall thermal installation
Concierge service

WARRANTY

10 year CRL warranty

Z I G G U R A T
H O U S E

SITE PLAN



Parking arrangements and external layouts are subject to change. Ask selling agents for details.



FLOOR PLANS

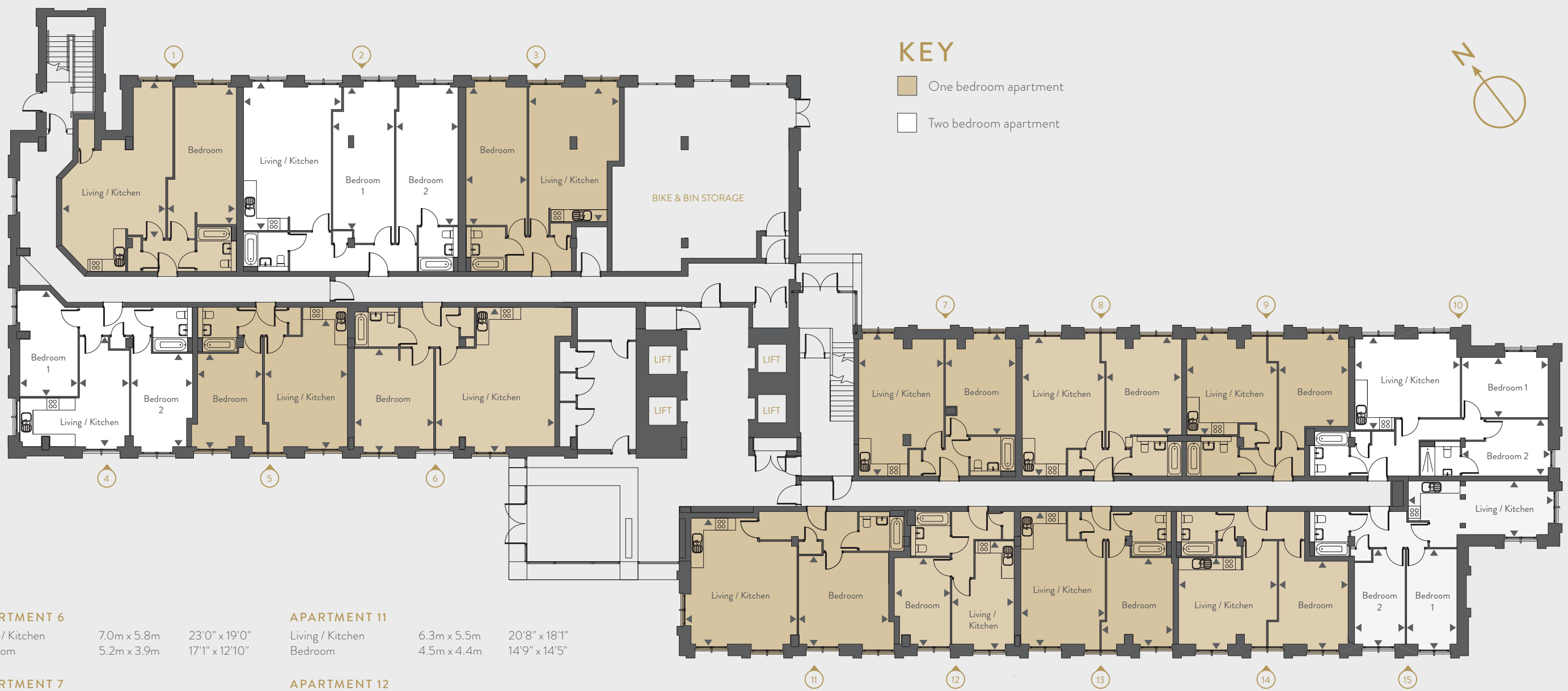
GROUND FLOOR



Z I G G U R A T
H O U S E

FLOOR PLANS

GROUND FLOOR



APARTMENT 1

Living / Kitchen	7.7m x 5.1m	25'3" x 16'9"
Bedroom	6.7m x 3.3m	22'0" x 10'10"

APARTMENT 2

Living / Kitchen	7.0m x 4.8m	23'0" x 15'9"
Bedroom 1	7.0m x 3.0m	23'0" x 9'10"
Bedroom 2	7.0m x 3.0m	23'0" x 9'10"

APARTMENT 3

Living / Kitchen	6.6m x 4.4m	21'8" x 14'5"
Bedroom	6.6m x 3.0m	21'8" x 9'10"

APARTMENT 4

Living / Kitchen	5.4m x 5.4m	17'9" x 17'9"
Bedroom 1	5.2m x 2.8m	17'1" x 9'2"
Bedroom 2	4.6m x 3.0m	15'1" x 9'10"

APARTMENT 5

Living / Kitchen	7.1m x 4.0m	23'4" x 13'1"
Bedroom	4.7m x 3.1m	15'5" x 10'2"

APARTMENT 6

Living / Kitchen	7.0m x 5.8m	23'0" x 19'0"
Bedroom	5.2m x 3.9m	17'1" x 12'10"

APARTMENT 7

Living / Kitchen	7.0m x 4.1m	23'0" x 13'5"
Bedroom	5.0m x 3.4m	16'5" x 11'2"

APARTMENT 8

Living / Kitchen	6.7m x 4.0m	22'0" x 13'1"
Bedroom	5.0m x 3.7m	16'5" x 12'2"

APARTMENT 9

Living / Kitchen	5.0m x 4.4m	16'5" x 14'5"
Bedroom	4.5m x 3.4m	14'9" x 11'2"

APARTMENT 10

Living / Kitchen	5.1m x 4.6m	16'9" x 15'1"
Bedroom 1	4.2m x 2.9m	13'9" x 9'6"
Bedroom 2	4.2m x 2.8m	13'9" x 9'2"

APARTMENT 11

Living / Kitchen	6.3m x 5.5m	20'8" x 18'1"
Bedroom	4.5m x 4.4m	14'9" x 14'5"

APARTMENT 12

Living / Kitchen	5.4m x 3.1m	17'9" x 10'2"
Bedroom	4.4m x 2.7m	14'5" x 8'10"

APARTMENT 13

Living / Kitchen	6.6m x 4.1m	21'8" x 13'5"
Bedroom	4.3m x 3.5m	14'1" x 11'6"

APARTMENT 14

Living / Kitchen	4.8m x 4.6m	15'9" x 15'1"
Bedroom	4.3m x 3.4m	14'1" x 11'2"

APARTMENT 15

Living / Kitchen	7.1m x 2.6m	23'4" x 8'6"
Bedroom 1	4.9m x 2.5m	16'1" x 8'2"
Bedroom 2	4.9m x 2.5m	16'1" x 8'2"



Z I G G U R A T
H O U S E



FLOOR PLANS

FLOORS 1-6



Z I G G U R A T
H O U S E



Z I G G U R A T
H O U S E



FLOOR PLANS

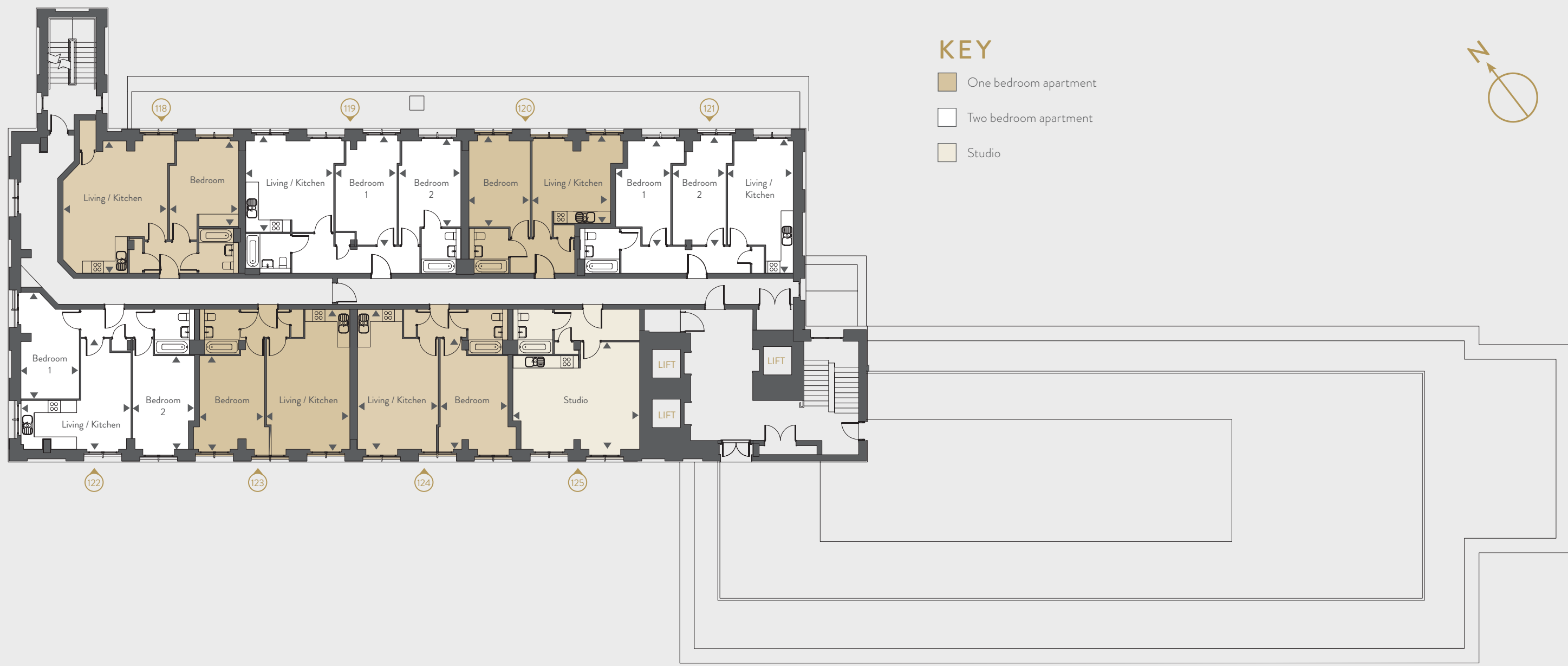
FLOOR 7



Z I G G U R A T
H O U S E

FLOOR PLANS

FLOOR
7



APARTMENT 118

Living / Kitchen	6.5m x 5.1m	21'4" x 16'9"
Bedroom	4.3m x 3.3m	14'1" x 10'10"

APARTMENT 119

Living / Kitchen	4.7m x 4.3m	15'5" x 14'1"
Bedroom 1	5.4m x 3.0m	17'9" x 9'10"
Bedroom 2	4.3m x 3.0m	14'1" x 9'10"

APARTMENT 120

Living / Kitchen	4.2m x 3.8m	13'9" x 12'6"
Bedroom 1	4.5m x 3.0m	14'9" x 9'10"

APARTMENT 121

Living / Kitchen	6.0m x 3.2m	19'8" x 10'6"
Bedroom 1	5.3m x 2.7m	17'5" x 8'10"
Bedroom 2	5.3m x 2.6m	17'5" x 8'6"

APARTMENT 122

Living / Kitchen	5.4m x 5.4m	17'9" x 17'9"
Bedroom 1	5.2m x 2.8m	17'1" x 9'2"
Bedroom 2	4.6m x 3.0m	15'1" x 9'10"

APARTMENT 123

Living / Kitchen	6.9m x 4.0m	22'8" x 13'1"
Bedroom	4.7m x 3.1m	15'5" x 10'2"

APARTMENT 124

Living / Kitchen	6.9m x 3.9m	22'8" x 12'10"
Bedroom	5.1m x 3.3m	16'9" x 10'10"

APARTMENT 125

Studio	6.2m x 5.2m	20'4" x 17'1"
--------	-------------	---------------





THE BEST FURNITURE IN DESIGN AND QUALITY

Quinata Property Group have teamed up with Andrew James Design Interiors to create tailored furniture packages for Investors and Homeowners alike.

With a wide range of quality packages available for both hire and purchase, Andrew James Design Interiors can also assist with refreshing your new home with replenishment packages. Also specialising in made to measure bespoke blinds, curtains and soft furnishings, Andrew James Design Interiors have got each and every aspect covered ensuring that you are provided with beautiful furniture for practical living.

Andrew James Design Interiors work closely with you to help achieve maximum rental value for your property with a comprehensive inventory and an impeccable service.

www.andrewjamesuk.com

ABOUT QUINATA PROPERTY GROUP



Quinata Property Group has grown from strength to strength acquiring and developing over 1,000 apartments into a vast portfolio across the UK, with hundreds more currently under construction.

Quinata are renowned for an unrivalled attention to design and detail, teamed with a superior level of finish and specification compared to the market's competition, giving every development a distinctive edge.



From left to right: Dorking, Farnborough, Brentwood.



SALES ENQUIRIES



PLEASE CONTACT THE SELLING AGENTS



01992 663890

salesherts@lanesnewhomes.co.uk

2 Market Street
Hertford
SG14 1BD



020 8954 8626

newhomes@prestonbennett.co.uk

37/41 Church Road
Stanmore
HA7 4AA

A DEVELOPMENT BY



GENERAL DISCLAIMER

Whilst every care has been taken to ensure accuracy these particulars do not constitute part of any offer or contract and the right to change plans, specifications and materials is reserved. All measurements are given as a guide only. Purchasers are advised to check plot specific dimensions and specifications prior to reservation. No liability can be accepted for any errors arising there from. Development images are indicative and may vary. Specifications for this development may not include fixtures, fittings and furnishings shown in the photographs and illustrations. Features and finishes are shown for illustrative purposes only and are not intended to form part of any contract or warranty. No responsibility is taken for any other error, omission, or mis-statements in these particulars. Neither the vendor nor its agents make or give, whether in these particulars, during the negotiations or otherwise, any representation or warranty in relation to this property.

